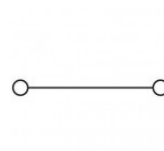
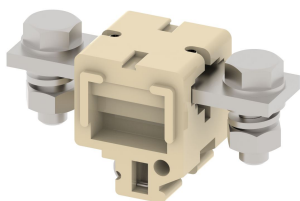


CBT300T

Terminal Type - CBT300T , High Current connectors, nominal voltage: 1000 V, nominal current: 300 A, Rated cross-section - 120 mm², connection method: Bolt connection - Nuts are slotted for screw driver operation, number of connections: 2, cross-section: 70 mm² - 120 mm², mounting type: TS32



Approvals

CE

General Information

Product Name	CBT300T
Connection Method	Bolt Connection
Rating	1000 V/300 A/120 mm ² /10 Nm
HSN Number	85389000
Standard Packing Qty(in No)	10
Country Of Origin	India
Screw thread	M10

Dimensions & Weight

Width	40 mm	1.57 inch
Length	96 mm	3.78 inch
Height	52 mm	2.05 inch
Weight of std. Packing Unit	2.81 Kg	

Material Data

Insulating Material	Melamine
Standard Colour	Khakhi
Colour Variants	Red , Yellow , Blue , Black ,

Rated Conductor Size

Conductor cross section flexible min	70 mm ²
Conductor cross section flexible max	120 mm ²
Conductor cross section solid min	70 mm ²
Conductor cross section solid max	120 mm ²

Ratings - IEC

Connection in acc. with standard	IEC 60947-7-1
Nominal Voltage U_n	1000 V
Nominal Current I_n	300 A
Nominal cross section	120 mm ²
Short-time current	14.40 kA
Rated surge voltage	8 kV
Degree of pollution	3

