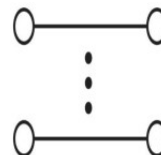
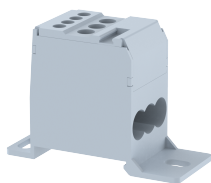


## DBD16

Terminal Type - DBD16, Panel Mounted distribution, nominal voltage: 630 V, nominal current: 76 A , Rated cross-section - IC-16 mm<sup>2</sup>,OG-2X16 mm<sup>2</sup>, 4X6 mm<sup>2</sup>, connection method: Screw connection, number of connections: 7 , cross-section: IC- 6 - 16 mm<sup>2</sup>,OG- 2.5-16 mm<sup>2</sup>, mounting type: TS35/15, TS35/7.5



### Approvals

CE

### General Information

Product Name	DBD16
Connection Method	Screw Connection
Rating	630 V/76 A/IC-16 mm <sup>2</sup> ,OG-2X16 mm <sup>2</sup> , 4X6 mm <sup>2</sup> /IC-1.2 Nm , OG-0.8 Nm
HSN Number	85389000
Standard Packing Qty(in No)	10
Country Of Origin	India
Screw thread	IC-M5 , OG-M4

### Dimensions & Weight

Width	27.5 mm	1.08 inch
Length	66 mm	2.6 inch
Height	46.5 mm	1.83 inch
Weight of std. Packing Unit	0.69 Kg	

### Material Data

Insulating Material	Polyamide 6,6
Standard Colour	Gray
Colour Variants	Red , Yellow , Blue , Black , Green , Khakhi , Gray ,

### Rated Conductor Size

Conductor cross section flexible min	IC-6 mm <sup>2</sup> , OG-2.5 to 6 mm <sup>2</sup>
Conductor cross section flexible max	IC-16 mm <sup>2</sup> , OG-6 to 16 mm <sup>2</sup>
Conductor cross section solid min	IC-6 mm <sup>2</sup> , OG-2.5 to 6 mm <sup>2</sup>
Conductor cross section solid max	IC-16 mm <sup>2</sup> , OG-6 to 16 mm <sup>2</sup>

**Ratings - IEC**

Connection in acc. with standard	IEC 60947-7-1
Nominal Voltage $U_n$	630 V
Nominal Current $I_n$	76 A
Nominal cross section	IC-16 mm <sup>2</sup> , OG-2X16 mm <sup>2</sup> , 4X6 mm <sup>2</sup>
Short-time current	1.92 kA
Rated surge voltage	8 kV
Degree of pollution	3

