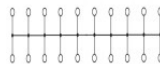
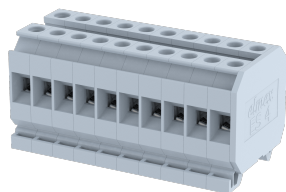


DBM4-10WAY

Terminal Type - DBM4-10WAY , Panel Mounted Terminal , nominal voltage: 500 V , nominal current: 32 A , Rated cross-section - 4 mm² , connection method: Screw connection, number of connections: 20 , cross section: 0.5 mm² - 4 mm², mounting type: TS 15



Approvals

CE

General Information

Product Name	DBM4-10WAY
Connection Method	Screw Connection
Rating	500 V/32 A/4 mm ² /0.5 Nm
HSN Number	85389000
Standard Packing Qty(in No)	10
Country Of Origin	India
Screw thread	M3

Dimensions & Weight

Width	61.5 mm	2.42 inch
Length	28.5 mm	1.12 inch
Height	29.7 mm	1.17 inch
Weight of std. Packing Unit	0.7 Kg	

Material Data

Insulating Material	Polyamide 6,6
Standard Colour	Gray
Colour Variants	Red , Yellow , Blue , Black , Green , Khakhi , Gray ,

Rated Conductor Size

Conductor cross section flexible min	0.5 mm ²
Conductor cross section flexible max	4 mm ²
Conductor cross section solid min	0.5 mm ²
Conductor cross section solid max	4 mm ²

Ratings - IEC

Connection in acc. with standard	IEC 60947-7-1
Nominal Voltage U_n	500 V
Nominal Current I_n	32 A
Nominal cross section	4 mm ²
Short-time current	0.48 kA
Rated surge voltage	6 kV
Degree of pollution	3

