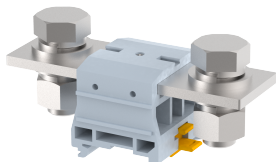


DPBB240

Terminal Type - DPBB240 , High Current connectors, nominal voltage: 1000 V, nominal current: 415 A, Rated cross-section - 240 mm², connection method: Bolt connection, number of connections: 2, cross-section: 70 mm² - 240 mm², mounting type: TS 35/15, TS 32, colour: GREY



Approvals

CE

General Information

Product Name	DPBB240
Connection Method	Bolt Connection
Rating	1000 V/415 A/240 mm ² /25 Nm
HSN Number	85389000
Standard Packing Qty(in No)	5
Country Of Origin	India
Screw thread	M16

Dimensions & Weight

Width	53 mm	2.09 inch
Length	125 mm	4.92 inch
Height	59 mm	2.32 inch
Weight of std. Packing Unit	3.28 Kg	

Material Data

Insulating Material	Polyamide 6,6
Standard Colour	Gray
Colour Variants	Red , Yellow , Blue , Black , Green , Khakhi ,

Rated Conductor Size

Conductor cross section flexible min	70 mm ²
Conductor cross section flexible max	240 mm ²
Conductor cross section solid min	70 mm ²
Conductor cross section solid max	240 mm ²

Ratings - IEC

Connection in acc. with standard	IEC 60947-7-1
Nominal Voltage U_n	1000 V
Nominal Current I_n	415 A
Nominal cross section	240 mm ²
Short-time current	NAV kA
Rated surge voltage	12 kV
Degree of pollution	3

