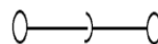
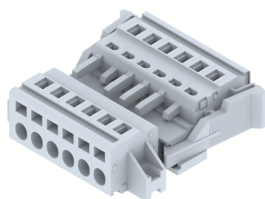


DPSC5.08PM-6W

Terminal Type - DPSC5.08PM - 6W , Plug & socket type terminal block , nominal voltage: 250 V, nominal current: 16 A, connection method: Spring cage connection , number of connections: 12, cross section: 0.2 mm² - 2.5 mm², Rated cross section- 2.5 mm², mounting type: Panel mounting / Surface mounting



Approvals

CE

General Information

| | |
|-----------------------------|-------------------------------------|
| Product Name | DPSC5.08PM-6W |
| Connection Method | Spring Cage Connection |
| Rating | 250 V/16 A/2.5 mm ² / Nm |
| HSN Number | 85389000 |
| Standard Packing Qty(in No) | 50 |
| Country Of Origin | India |
| Screw thread | NAV |

Dimensions & Weight

| | | |
|-----------------------------|----------|-----------|
| Width | 46.37 mm | 1.83 inch |
| Length | 45.25 mm | 1.78 inch |
| Height | 14.45 mm | 0.57 inch |
| Weight of std. Packing Unit | 1.27 Kg | |

Material Data

| | |
|---------------------|--|
| Insulating Material | Polyamide 6,6 |
| Standard Colour | Gray |
| Colour Variants | Red , Yellow , Blue , Black , Green , Khakhi , |

Rated Conductor Size

| | |
|--------------------------------------|---------------------|
| Conductor cross section flexible min | 0.2 mm ² |
| Conductor cross section flexible max | 2.5 mm ² |
| Conductor cross section solid min | 0.2 mm ² |
| Conductor cross section solid max | 2.5 mm ² |

Ratings - IEC

| | |
|----------------------------------|---------------------|
| Connection in acc. with standard | IEC 60947-7-1 |
| Nominal Voltage U_n | 250 V |
| Nominal Current I_n | 16 A |
| Nominal cross section | 2.5 mm ² |
| Short-time current | 0.18 kA |
| Rated surge voltage | 4 kV |
| Degree of pollution | 3 |

