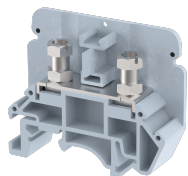


## KABTM4

Terminal Type - KABTM4 , Feed Through Terminal Block , nominal voltage: 1000 V, nominal current: 57 A, connection method: Bolt Connection - Screw and Nut driver operated, number of connections: 2, cross section: 0.5 mm<sup>2</sup> - 10 mm<sup>2</sup>, mounting type: TS 35/7.5, TS 35/15 , TS 32



### Approvals

CE

### General Information

Product Name	KABTM4
Connection Method	Bolt Connection
Rating	1000 V/57 A/10 mm <sup>2</sup> /1.2 Nm
HSN Number	85389000
Standard Packing Qty(in No)	50
Country Of Origin	INDIA
Screw thread	M4

### Dimensions & Weight

Width	13 mm	0.51 inch
Length	50 mm	1.97 inch
Height	41.4 mm	1.63 inch
Weight of std. Packing Unit	0.97 Kg	

### Material Data

Insulating Material	Polyamide 6,6
Standard Colour	Gray
Colour Variants	Red , Yellow , Blue , Black , Green , Khakhi , Gray ,

### Rated Conductor Size

Conductor cross section flexible min	0.5 mm <sup>2</sup>
Conductor cross section flexible max	10 mm <sup>2</sup>
Conductor cross section solid min	0.5 mm <sup>2</sup>
Conductor cross section solid max	10 mm <sup>2</sup>

**Ratings - IEC**

Connection in acc. with standard	IEC 60947-7-1
Nominal Voltage $U_n$	1000 V
Nominal Current $I_n$	57 A
Nominal cross section	10 mm <sup>2</sup>
Short-time current	1.2 kA
Rated surge voltage	8 kV
Degree of pollution	3

