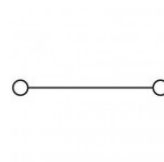
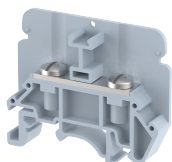


KATM3E

Terminal Type - KATM3E , Feed through terminal block, nominal voltage: 800 V (Tested at 1100 V) , nominal current: 24 A, connection method: Bolt connection - Screw driver Operated , number of connections: 2, cross section: 0.5 mm² - 2.5 mm², mounting type: TS 35/7.5, TS 35/15 , TS 32



Approvals

CE

General Information

Product Name	KATM3E
Connection Method	Bolt Connection
Rating	800 V/24 A/2.5 mm ² /0.5 Nm
HSN Number	85389000
Standard Packing Qty(in No)	50
Country Of Origin	INDIA
Screw thread	M3

Dimensions & Weight

Width	8.5 mm	0.33 inch
Length	50 mm	1.97 inch
Height	41.4 mm	1.63 inch
Weight of std. Packing Unit	0.59 Kg	

Material Data

Insulating Material	Polyamide 6,6
Standard Colour	Gray
Colour Variants	Red , Yellow , Blue , Black , Green , Khakhi ,

Rated Conductor Size

Conductor cross section flexible min	0.5 mm ²
Conductor cross section flexible max	2.5 mm ²
Conductor cross section solid min	0.5 mm ²
Conductor cross section solid max	2.5 mm ²

Ratings - IEC

Connection in acc. with standard	IEC 60947-7-1
Nominal Voltage U_n	800 V
Nominal Current I_n	24 A
Nominal cross section	2.5 mm ²
Short-time current	0.3 kA
Rated surge voltage	8 kV
Degree of pollution	3

