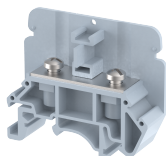


KATM4E

Terminal Type - KATM4E , Feed through terminal block, nominal voltage: 800 V, nominal current: 57 A, connection method: Bolt connection - Screw driver Operated, number of connections: 2, cross section: 0.5 mm² - 10 mm², width: 13 mm , length: 50 mm , height : 41.4 mm , mounting type: TS 35/7.5, TS 35/15 , TS 32



Approvals

CE

General Information

Product Name	KATM4E
Connection Method	Bolt Connection
Rating	800 V/57 A/10 mm ² /1.2 Nm
HSN Number	85389000
Standard Packing Qty(in No)	50
Country Of Origin	INDIA
Screw thread	M4

Dimensions & Weight

Width	13 mm	0.51 inch
Length	50 mm	1.97 inch
Height	41.4 mm	1.63 inch
Weight of std. Packing Unit	0.8 Kg	

Material Data

Insulating Material	Polyamide 6,6
Standard Colour	Gray
Colour Variants	Red , Yellow , Blue , Black , Green , Khakhi ,

Rated Conductor Size

Conductor cross section flexible min	0.5 mm ²
Conductor cross section flexible max	10 mm ²
Conductor cross section solid min	0.5 mm ²
Conductor cross section solid max	10 mm ²

Ratings - IEC

Connection in acc. with standard	IEC 60947-7-1
Nominal Voltage U_n	800 V
Nominal Current I_n	57 A
Nominal cross section	10 mm ²
Short-time current	1.2 kA
Rated surge voltage	8 kV
Degree of pollution	3

