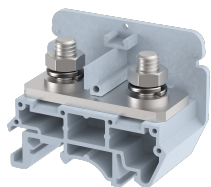


KBT100

Terminal Type - KBT100 , Feed through Terminal Block, nominal voltage: 800 V, nominal current: 125 A, connection method: Bolt Connection - Nut driver operated, number of connections: 2, cross section: 6 mm² - 35 mm², width: 26 mm , length: 52 mm , height : 41.4 mm , mounting type: TS 35/7.5, TS 35/15 , TS 32



Approvals

CE

General Information

Product Name	KBT100
Connection Method	Bolt Connection
Rating	800 V/125 A/35 mm ² /2.5 Nm
HSN Number	85389000
Standard Packing Qty(in No)	25
Country Of Origin	INDIA
Screw thread	M6

Dimensions & Weight

Width	26 mm	1.02 inch
Length	52 mm	2.05 inch
Height	41.4 mm	1.63 inch
Weight of std. Packing Unit	1.29 Kg	

Material Data

Insulating Material	Polyamide 6,6
Standard Colour	Gray
Colour Variants	Red , Yellow , Blue , Black , Green , Khakhi ,

Rated Conductor Size

Conductor cross section flexible min	6 mm ²
Conductor cross section flexible max	35 mm ²
Conductor cross section solid min	6 mm ²
Conductor cross section solid max	35 mm ²

Ratings - IEC

Connection in acc. with standard	IEC 60947-7-1
Nominal Voltage U_n	800 V
Nominal Current I_n	125 A
Nominal cross section	35 mm ²
Short-time current	4.2 kA
Rated surge voltage	8 kV
Degree of pollution	3

