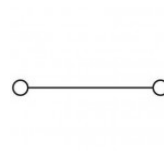
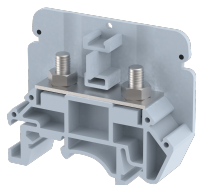


KBTM4E

Terminal Type - KBTM4E , Feed through terminal block, nominal voltage: 1000 V (Tested at 1100 V) , nominal current: 57 A, connection method: Bolt connection - Nut Driver Operated, number of connections: 2, cross section: 0.5 mm² - 10 mm², mounting type: TS 35/7.5, TS 35/15 , TS 32



Approvals

CE

General Information

| | |
|-----------------------------|----------------------------------------|
| Product Name | KBTM4E |
| Connection Method | Bolt Connection |
| Rating | 1000 V/57 A/10 mm ² /1.2 Nm |
| HSN Number | 85389000 |
| Standard Packing Qty(in No) | 50 |
| Country Of Origin | INDIA |
| Screw thread | M4 |

Dimensions & Weight

| | | |
|-----------------------------|---------|-----------|
| Width | 13 mm | 0.51 inch |
| Length | 50 mm | 1.97 inch |
| Height | 41.4 mm | 1.63 inch |
| Weight of std. Packing Unit | 0.75 Kg | |

Material Data

| | |
|---------------------|------------------------------------------------|
| Insulating Material | Polyamide 6,6 |
| Standard Colour | Gray |
| Colour Variants | Red , Yellow , Blue , Black , Green , Khakhi , |

Rated Conductor Size

| | |
|--------------------------------------|---------------------|
| Conductor cross section flexible min | 0.5 mm ² |
| Conductor cross section flexible max | 10 mm ² |
| Conductor cross section solid min | 0.5 mm ² |
| Conductor cross section solid max | 10 mm ² |

Ratings - IEC

| | |
|----------------------------------|--------------------|
| Connection in acc. with standard | IEC 60947-7-1 |
| Nominal Voltage U_n | 1000 V |
| Nominal Current I_n | 57 A |
| Nominal cross section | 10 mm ² |
| Short-time current | 1.2 kA |
| Rated surge voltage | 8 kV |
| Degree of pollution | 3 |

