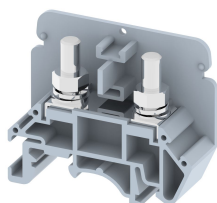


KBTM5-15

Terminal Type - KBTM5-15 , Feed Through Terminal Block , nominal voltage: 800 V (Tested at 1100 V) , nominal current: 76 A, connection method: Bolt Connection - Nut driver operated, number of connections: 2, cross section: 0.5 mm² - 16 mm², AWG: 14 - 6, mounting type: TS 35/7.5, TS 35/15, TS 32



Approvals



General Information

Product Name	KBTM5-15
Connection Method	Bolt Connection
Rating	800 V/76 A/16 mm ² /2 Nm
HSN Number	85389000
Standard Packing Qty(in No)	50
Country Of Origin	INDIA
Screw thread	M5

Dimensions & Weight

Width	15 mm	0.59 inch
Length	50 mm	1.97 inch
Height	41.4 mm	1.63 inch
Weight of std. Packing Unit	1.1 Kg	

Material Data

Insulating Material	Polyamide 6,6
Standard Colour	Gray
Colour Variants	Red , Yellow , Blue , Black , Green , Khakhi ,

Rated Conductor Size

Conductor cross section flexible min	0.5 mm ²
Conductor cross section flexible max	16 mm ²
Conductor cross section solid min	0.5 mm ²
Conductor cross section solid max	16 mm ²

Ratings - IEC

Connection in acc. with standard	IEC 60947-7-1
Nominal Voltage U_n	800 V
Nominal Current I_n	76 A
Nominal cross section	16 mm ²
Short-time current	1.92 kA
Rated surge voltage	8 kV
Degree of pollution	3

Ratings - ATEX

ATEX Standard	EN 60079-7
ATEX Nominal Voltage U_n	630 V
ATEX Nominal Current I_n	57 A
ATEX Cross Sec. Flexible Max.	16 mm ²

Ratings - CSA

CSA Standard	CSA C22.2 NO 158
B - CSA Nominal Voltage U_N	600 V
B - CSA Nominal Current I_N	65 A
B - CSA Wire Min	14 AWG
B - CSA Wire Max	6 AWG

Ratings - UL

UL Standard	
B - UL Nominal Voltage U_N	0 V
B - UL Nominal Current I_N	0 A
B - UL Wire Min	0 AWG
B - UL Wire Max	0 AWG