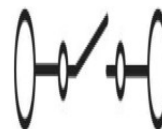
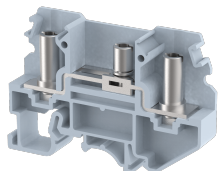


KLTD4

Terminal Type - KLTD4, Test Disconnect terminal block, nominal voltage: 800 V (Tested at 1100 V), nominal current: 41 A, Rated cross-section - 6 mm², connection method: Bolt Connection, number of connections: 2, cross-section: 0.5 mm² - 6 mm², AWG: 14 - 6, mounting type: TS 35/7.5, TS 35/15, TS 32



Approvals



General Information

Product Name	KLTD4
Connection Method	Bolt Connection
Rating	800 V/41 A/6 mm ² /1.2 Nm
HSN Number	85389000
Standard Packing Qty(in No)	50
Country Of Origin	India
Screw thread	M4

Dimensions & Weight

Width	12 mm	0.47 inch
Length	74 mm	2.91 inch
Height	49.5 mm	1.95 inch
Weight of std. Packing Unit	1.86 Kg	

Material Data

Insulating Material	Polyamide 6,6
Standard Colour	Gray
Colour Variants	Red , Yellow , Blue , Black , Green , Khakhi ,

Rated Conductor Size

Conductor cross section flexible min	0.5 mm ²
Conductor cross section flexible max	6 mm ²
Conductor cross section solid min	0.5 mm ²
Conductor cross section solid max	6 mm ²

Ratings - IEC

Connection in acc. with standard	IEC 60947-7-1
Nominal Voltage U_n	800 V
Nominal Current I_n	41 A
Nominal cross section	6 mm ²
Short-time current	0.72 kA
Rated surge voltage	6 kV
Degree of pollution	3

Ratings - ATEX

ATEX Standard	EN 60079-7
ATEX Nominal Voltage U_n	800 V
ATEX Nominal Current I_n	32 A
ATEX Cross Sec. Flexible Max.	6 mm ²

Ratings - CSA

CSA Standard	CSA C22.2 NO 158
B - CSA Nominal Voltage U_N	600 V
B - CSA Nominal Current I_N	50 A
B - CSA Wire Min	14 AWG
B - CSA Wire Max	6 AWG

Ratings - UL

UL Standard	UL 1059
B - UL Nominal Voltage U_N	600 V
B - UL Nominal Current I_N	50 A
B - UL Wire Min	14 AWG
B - UL Wire Max	6 AWG