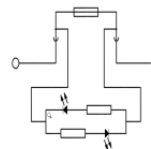
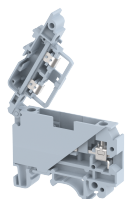


## **KUDF4AD12V**

Terminal Type - KUDF4AD12V, Fuse terminal block with LED for 12VAC/VDC, nominal voltage: 12 V, nominal current: 6.3 A, Rated cross-section - 4 mm<sup>2</sup>, suitable size of cartridge fuse: 5X20 mm and 5x25 mm , connection method: Screw connection, number of connections: 2, cross-section: 0.5 mm<sup>2</sup> - 4 mm<sup>2</sup>, mounting type: TS 35/7.5 , TS 35/15 , TS 32



### Approvals

CE

### General Information

Product Name	KUDF4AD12V
Connection Method	Screw Connection
Rating	12 V/6.3 A/4 mm <sup>2</sup> /0.4 Nm
HSN Number	85389000
Standard Packing Qty(in No)	100
Country Of Origin	India
Screw thread	M3

### Dimensions & Weight

Width	8 mm	0.31 inch
Length	54.5 mm	2.15 inch
Height	47.8 mm	1.88 inch
Weight of std. Packing Unit	1.53 Kg	

### Material Data

Insulating Material	Polyamide 6,6
Standard Colour	Gray
Colour Variants	Red , Yellow , Blue , Black , Green , Khakhi ,

### Rated Conductor Size

Conductor cross section flexible min	0.5 mm <sup>2</sup>
Conductor cross section flexible max	4 mm <sup>2</sup>
Conductor cross section solid min	0.5 mm <sup>2</sup>
Conductor cross section solid max	4 mm <sup>2</sup>

**Ratings - IEC**

Connection in acc. with standard	IEC-60947-7-3
Nominal Voltage $U_n$	12 V
Nominal Current $I_n$	6.3 A
Nominal cross section	4 mm <sup>2</sup>
Short-time current	NAP kA
Rated surge voltage	8 kV
Degree of pollution	3

