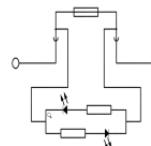
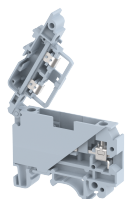


KUDF4AD240V

Terminal Type - KUDF4AD240V, Fuse terminal block with LED for 240 VAC/VDC, nominal voltage: 240 V, Rated cross-section - 4 mm², nominal current: 6.3 A, suitable size of cartridge fuse: 5X20 mm and 5x25 mm, connection method: Screw connection, number of connections: 2, cross-section: 0.5 mm² - 4 mm², mounting type: TS 35/7.5, TS 35/15, TS 32



Approvals

CE

General Information

Product Name	KUDF4AD240V
Connection Method	Screw Connection
Rating	240 V/6.3 A/4 mm ² /0.4 Nm
HSN Number	85389000
Standard Packing Qty(in No)	100
Country Of Origin	India
Screw thread	M3

Dimensions & Weight

Width	8 mm	0.31 inch
Length	54.5 mm	2.15 inch
Height	47.8 mm	1.88 inch
Weight of std. Packing Unit	1.54 Kg	

Material Data

Insulating Material	Polyamide 6,6
Standard Colour	Gray
Colour Variants	Red , Yellow , Blue , Black , Green , Khakhi ,

Rated Conductor Size

Conductor cross section flexible min	0.5 mm ²
Conductor cross section flexible max	4 mm ²
Conductor cross section solid min	0.5 mm ²
Conductor cross section solid max	4 mm ²

Ratings - IEC

Connection in acc. with standard	IEC-60947-7-3
Nominal Voltage U_n	240 V
Nominal Current I_n	6.3 A
Nominal cross section	4 mm ²
Short-time current	NAP kA
Rated surge voltage	8 kV
Degree of pollution	3

