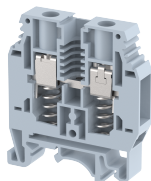


KULT1

Terminal Type - KULT1 , Spring loaded terminal block, nominal voltage: 1000 V, nominal current: 57 A, Rated cross-section - 10 mm² , connection method: Screw connection with spring support, number of connections: 2, cross-section: 1.5 mm² - 16 mm², AWG: 16- 6 , mounting type: TS 35/7.5, TS 35/15 , TS 32 , colour: GREY



Approvals



General Information

Product Name	KULT1
Connection Method	Screw Connection with spring support
Rating	1000 V/57 A/10 mm ² /1.2 Nm
HSN Number	85389000
Standard Packing Qty(in No)	100
Country Of Origin	India
Screw thread	M4

Dimensions & Weight

Width	10 mm	0.39 inch
Length	52 mm	2.05 inch
Height	58.5 mm	2.3 inch
Weight of std. Packing Unit	2.7 Kg	

Material Data

Insulating Material	Polyamide 6,6
Standard Colour	Gray
Colour Variants	Red , Yellow , Blue , Black , Green , Khakhi ,

Rated Conductor Size

Conductor cross section flexible min	1.5 mm ²
Conductor cross section flexible max	10 mm ²
Conductor cross section solid min	1.5 mm ²
Conductor cross section solid max	16 mm ²

Ratings - IEC

Connection in acc. with standard	IEC 60947-7-1
Nominal Voltage U_n	1000 V
Nominal Current I_n	57 A
Nominal cross section	10 mm ²
Short-time current	1.2 kA
Rated surge voltage	8 kV
Degree of pollution	3

Ratings - ATEX

ATEX Standard	EN 60079-7
ATEX Nominal Voltage U_n	1000 V
ATEX Nominal Current I_n	57 A
ATEX Cross Sec. Flexible Max.	10 mm ²

Ratings - CSA

CSA Standard	CSA C22.2 NO 158
B - CSA Nominal Voltage U_N	600 V
B - CSA Nominal Current I_N	65 A
B - CSA Wire Min	16 AWG
B - CSA Wire Max	6 AWG

Ratings - UL

UL Standard	UL 1059
B - UL Nominal Voltage U_N	600 V
B - UL Nominal Current I_N	65 A
B - UL Wire Min	16 AWG
B - UL Wire Max	6 AWG