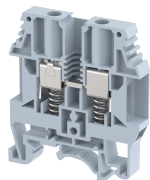


## KULT6

Terminal Type - KULT6 , Spring loaded feed through terminal block, nominal voltage: 1000 V, nominal current: 41 A, Rated cross-section - 6.0 mm<sup>2</sup>, connection method: Screw connection with spring support, number of connections: 2, cross-section: 0.5 mm<sup>2</sup> - 10 mm<sup>2</sup>, AWG: 24 - 8 , mounting type: TS 35/7.5, TS 35/15 , TS 32



### Approvals



### General Information

|                             |                                       |
|-----------------------------|---------------------------------------|
| Product Name                | KULT6                                 |
| Connection Method           | Screw Connection with spring support  |
| Rating                      | 1000 V/41 A/6 mm <sup>2</sup> /1.4 Nm |
| HSN Number                  | 85389000                              |
| Standard Packing Qty(in No) | 100                                   |
| Country Of Origin           | India                                 |
| Screw thread                | M3.5                                  |

### Dimensions & Weight

|                             |         |           |
|-----------------------------|---------|-----------|
| Width                       | 8 mm    | 0.31 inch |
| Length                      | 52 mm   | 2.05 inch |
| Height                      | 58.6 mm | 2.31 inch |
| Weight of std. Packing Unit | 1.98 Kg |           |

### Material Data

|                     |  |
|---------------------|--|
| Insulating Material | Polyamide 6,6                                  |
| Standard Colour     | Gray   |
| Colour Variants     | Red , Yellow , Blue , Black , Green , Khakhi , |

### Rated Conductor Size

|                                      |                     |
|--------------------------------------|---------------------|
| Conductor cross section flexible min | 0.5 mm <sup>2</sup> |
| Conductor cross section flexible max | 6 mm <sup>2</sup>   |
| Conductor cross section solid min    | 0.5 mm <sup>2</sup> |
| Conductor cross section solid max    | 10 mm <sup>2</sup>  |

### Ratings - IEC

|                                  |                   |
|----------------------------------|-------------------|
| Connection in acc. with standard | IEC 60947-7-1     |
| Nominal Voltage $U_n$            | 1000 V            |
| Nominal Current $I_n$            | 41 A              |
| Nominal cross section            | 6 mm <sup>2</sup> |
| Short-time current               | 0.72 kA           |
| Rated surge voltage              | 8 kV              |
| Degree of pollution              | 3                 |

### Ratings - ATEX

|                               |                   |
|-------------------------------|-------------------|
| ATEX Standard                 | EN 60079-7        |
| ATEX Nominal Voltage $U_n$    | 750 V             |
| ATEX Nominal Current $I_n$    | 32 A              |
| ATEX Cross Sec. Flexible Max. | 6 mm <sup>2</sup> |

### Ratings - CSA

|                               |                  |
|-------------------------------|------------------|
| CSA Standard                  | CSA C22.2 NO 158 |
| B - CSA Nominal Voltage $U_N$ | 600 V            |
| B - CSA Nominal Current $I_N$ | 45 A             |
| B - CSA Wire Min              | 24 AWG           |
| B - CSA Wire Max              | 8 AWG            |

### Ratings - UL

|                              |         |
|------------------------------|---------|
| UL Standard                  | UL 1059 |
| B - UL Nominal Voltage $U_N$ | 600 V   |
| B - UL Nominal Current $I_N$ | 45 A    |
| B - UL Wire Min              | 24 AWG  |
| B - UL Wire Max              | 8 AWG   |