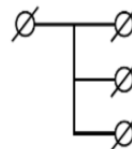
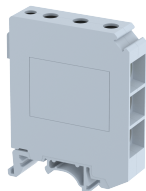


## LPT335

Terminal Type - LPT335 , Feed-through terminal block, nominal voltage: 400 V, nominal current: 125 A, connection method: Screw connection, Operated by - 4 mm Allen key, number of connections: 4, cross section: 6 mm<sup>2</sup> - 35 mm<sup>2</sup>, mounting type: TS 35/7.5, TS 35/15 , TS 32



### Approvals

CE

### General Information

Product Name	LPT335
Connection Method	Screw Connection
Rating	400 V/125 A/35 mm <sup>2</sup> /NAP Nm
HSN Number	85389000
Standard Packing Qty(in No)	10
Country Of Origin	India
Screw thread	NAP

### Dimensions & Weight

Width	14.3 mm	0.56 inch
Length	53.5 mm	2.11 inch
Height	65.5 mm	2.58 inch
Weight of std. Packing Unit	1.49 Kg	

### Material Data

Insulating Material	Polyamide 6,6
Standard Colour	Gray
Colour Variants	

### Rated Conductor Size

Conductor cross section flexible min	6 mm <sup>2</sup>
Conductor cross section flexible max	35 mm <sup>2</sup>
Conductor cross section solid min	6 mm <sup>2</sup>
Conductor cross section solid max	35 mm <sup>2</sup>

**Ratings - IEC**

Connection in acc. with standard	IEC 60947-7-1
Nominal Voltage $U_n$	400 V
Nominal Current $I_n$	125 A
Nominal cross section	35 mm <sup>2</sup>
Short-time current	4.2 kA
Rated surge voltage	4 kV
Degree of pollution	3

