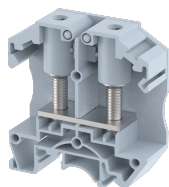


## OAT25

Terminal Type - OAT25 , Feed through terminal block with secured hinged cover, nominal voltage: 1000 V, nominal current: 125 A, connection method: Stud type connection, number of connections: 2, cross section: 1.5 mm<sup>2</sup> - 35 mm<sup>2</sup>, width: 18 mm , length: 60 mm , height : 63 mm , mounting type: TS 35/7.5, TS 35/15 , TS 32



### Approvals

CE

### General Information

Product Name	OAT25
Connection Method	Bolt Connection
Rating	1000 V/125 A/35 mm <sup>2</sup> /3 Nm
HSN Number	85389000
Standard Packing Qty(in No)	50
Country Of Origin	India
Screw thread	M6

### Dimensions & Weight

Width	18 mm	0.71 inch
Length	60 mm	2.36 inch
Height	63 mm	2.48 inch
Weight of std. Packing Unit	2.5 Kg	

### Material Data

Insulating Material	Polyamide 6,6
Standard Colour	Gray
Colour Variants	Red , Yellow , Blue , Black , Green , Khakhi ,

### Rated Conductor Size

Conductor cross section flexible min	1.5 mm <sup>2</sup>
Conductor cross section flexible max	35 mm <sup>2</sup>
Conductor cross section solid min	1.5 mm <sup>2</sup>
Conductor cross section solid max	35 mm <sup>2</sup>

**Ratings - IEC**

Connection in acc. with standard	IEC 60947-7-1
Nominal Voltage $U_n$	1000 V
Nominal Current $I_n$	125 A
Nominal cross section	35 mm <sup>2</sup>
Short-time current	3 kA
Rated surge voltage	8 kV
Degree of pollution	3

