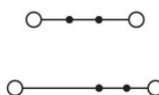
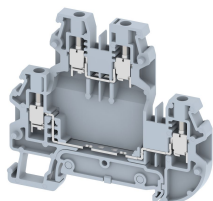


## TQ2.5-2T

Terminal Type - TQ2.5-2T, Multi-level Feed-through terminal block, nominal voltage: 500 V, nominal current: 24 A, Rated cross-section: 2.5 mm<sup>2</sup>, connection method: Screw connection, number of connections: 4, cross-section: 0.14 mm<sup>2</sup> - 4.0 mm<sup>2</sup>, mounting type: TS 35/7.5, TS 35/15



### Approvals

CE

### General Information

|                             |  |
|-----------------------------|--|
| Product Name                | TQ2.5-2T                               |
| Connection Method           | Screw Connection                       |
| Rating                      | 500 V/24 A/2.5 mm <sup>2</sup> /0.4 Nm |
| HSN Number                  | 85389000                               |
| Standard Packing Qty(in No) | 100                                    |
| Country Of Origin           | India                                  |
| Screw thread                | M2.6                                   |

### Dimensions & Weight

|                             |         |           |
|-----------------------------|---------|-----------|
| Width                       | 5 mm    | 0.2 inch  |
| Length                      | 70 mm   | 2.76 inch |
| Height                      | 65.2 mm | 2.57 inch |
| Weight of std. Packing Unit | 1.4 Kg  |           |

### Material Data

|                     |  |
|---------------------|--|
| Insulating Material | Polyamide 6,6                                  |
| Standard Colour     | Gray   |
| Colour Variants     | Red , Yellow , Blue , Black , Green , Khakhi , |

### Rated Conductor Size

|                                      |                      |
|--------------------------------------|----------------------|
| Conductor cross section flexible min | 0.14 mm <sup>2</sup> |
| Conductor cross section flexible max | 2.5 mm <sup>2</sup>  |
| Conductor cross section solid min    | 0.14 mm <sup>2</sup> |
| Conductor cross section solid max    | 4 mm <sup>2</sup>    |

### Ratings - IEC

|                                  |                     |
|----------------------------------|---------------------|
| Connection in acc. with standard | IEC 60947-7-1       |
| Nominal Voltage $U_n$            | 500 V               |
| Nominal Current $I_n$            | 24 A                |
| Nominal cross section            | 2.5 mm <sup>2</sup> |
| Short-time current               | 0.3 kA              |
| Rated surge voltage              | 6 kV                |
| Degree of pollution              | 3                   |

### Ratings - ATEX

|                               |                 |
|-------------------------------|-----------------|
| ATEX Standard                 |                 |
| ATEX Nominal Voltage $U_n$    | 0 V             |
| ATEX Nominal Current $I_n$    | A               |
| ATEX Cross Sec. Flexible Max. | mm <sup>2</sup> |

### Ratings - CSA

|                               |                  |
|-------------------------------|------------------|
| CSA Standard                  | CSA C22.2 NO 158 |
| B - CSA Nominal Voltage $U_N$ | 300 V            |
| B - CSA Nominal Current $I_N$ | 20 A             |
| B - CSA Wire Min              | 24 AWG           |
| B - CSA Wire Max              | 12 AWG           |

### Ratings - UL

|                              |         |
|------------------------------|---------|
| UL Standard                  | UL 1059 |
| B - UL Nominal Voltage $U_N$ | 300 V   |
| B - UL Nominal Current $I_N$ | 20 A    |
| B - UL Wire Min              | 24 AWG  |
| B - UL Wire Max              | 12 AWG  |